



Department of State

TELEGRAM

CONFIDENTIAL

21

AN: 0830419-0383

CONFIDENTIAL

PAGE 01 LIMA 07674 222133Z
ACTION ARA-16

R

INFO OCT-00 COPY-01 ADS-00 AID-07 INR-10 SS-10 OPR-02
CIAE-00 H-01 NSCE-00 NSAE-00 SSO-01 SY-06 HA-08
L-03 PH-08 PA-01 MCT-02 CCO-00 OMB-01 INRE-00
OCS-06 CA-01 FBOE-05 A-02 USSS-00 SYE-00 USIE-00
SP-02 OC-06 SR-06 PRS-01 /106 W
-----255071 222140Z /72

O R 222036Z JUL 83
FM ANEMBASSY LIMA
TO SECSTATE WASHDC IMMEDIATE 0104
INFO ANEMBASSY BOGOTA
ANEMBASSY CARACAS
ANEMBASSY LA PAZ
ANEMBASSY PANAMA
ANEMBASSY QUITO
USCINCSO QUARRY HTS PN
DIA WASHDC

DEPARTMENT OF STATE A/CDC/MR

OCT 3 1986

REVIEWED by [Signature] DATE _____
 RELEASE DECLASSIFY
 EXCISE DECLASSIFY in PART
 DENY Non-responsive info.
FOI, EO or PA exemptions _____

C O N F I D E N T I A L LIMA 7674

TS authority to:
 CLASSIFY as _____, OADR
 DOWNGRADE TS to S or C, OADR

PANAMA FOR ADS

DIA FOR IR BRANCH

EO 12356: DECL: OADR
TAGS: PTER PINS SHUM ASEC PE
SUBJECT: (U) TERRORIST ATTACK BLACKS OUT PERU'S CAPITAL

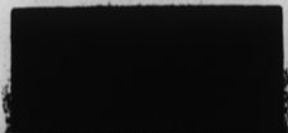
REFS: (A) LIMA 7247/(NOTAL), (B) LIMA 7522/(NOTAL)

1. (U) FOR THE SECOND TIME IN 1983, LIMA'S LIGHTS DIMMED,
THEN WENT OUT AS TERRORISTS (PRESUMABLY OF THE SENDERO
LUMINOSO - SL) STRUCK ON JULY 21 AT THE CAPITAL'S
ELECTRICAL TRANSMISSION SYSTEM. SERVICE RETURNED TO SOME
ZONES WITHIN AN HOUR AFTER THE 7:10 PM ATTACK, BUT LARGE
AREAS OF THE METROPOLITAN REGION REMAIN WITHOUT POWER AT
CONFIDENTIAL
CONFIDENTIAL

PAGE 02 LIMA 07674 222133Z

MID-MORNING ON THE 22ND.

CONFIDENTIAL



CONFIDENTIAL

2. (U) AS ON PREVIOUS OCCASIONS, ACCOUNTS OF DAMAGE ARE EASY TO COME BY, BUT ACCURATE INFORMATION IS NOT. SEVERAL MAJOR TRANSMISSION TOWERS WERE DOWNED, BUT NO DEATHS OR INJURIES ARE REPORTED, A MAJOR DISTINCTION SETTING OFF THIS ATTACK FROM JULY 11'S BLOODY EPISODE AT GOVERNING ACCION POPULAR (AP) HEADQUARTERS (REF A).

3. (C) THE ABSENCE OF INJURIES SUGGESTS THAT THE VARIOUS EXPLOSIONS HEARD AROUND THE CITY WERE, FOR THE MOST PART, "PETARDOS" THAT CAUSED MORE NOISE THAN DAMAGE. SHOOTING THAT OCCURRED IN CERTAIN NEIGHBORHOODS CAME MOSTLY FROM POLICE OR MILITARY WHO, AS ON PREVIOUS OCCASIONS, FIRED THEIR WEAPONS INTO THE AIR IN ORDER TO "FRIGHTEN OFF" TERRORISTS THAT MIGHT BE LURKING IN THE VICINITY.

4. (C) THE TERRORISTS MAY HAVE TIMED THEIR LIMA ATTACK TO COINCIDE WITH PRESIDENT BELAUNDE'S TRIP TO THE BOLIVAR BICENTENNIAL MEETING IN CARACAS (REF B) WHERE, WHILE PROMOTING A FAVORITE THEME (CONTINENTAL INTEGRATION), HE NOW MUST ALSO DEAL WITH THE EMBARRASSMENT OF TERRORISM AT HOME.

5. (C) COMMENT: LESS NOTICED, BUT POTENTIALLY MORE IMPORTANT, NATIONAL POLICE CONTINUE TO ARREST SL SUSPECTS IN CONNECTION WITH SEPCIFIC INCIDENTS--THE AP HEADQUARTERS ATTACK AND, ON JULY 18, THE ASSASSINATION OF A CIVIL GUARD NEAR HUACHO (NORTH OF LIMA). UNVERIFIED REPORTS INDICATE THAT POLICE CAPTURED TWO SUSPECTS DURING LAST NIGHT'S ATTACK. SENDERO AGAIN PROVED IT RETAINS ABILITY TO OPERATE IN THE CAPITAL BUT A COST TO ITS URBAN ORGANIZATIONAL STRUCTURE.

CONFIDENTIAL
CONFIDENTIAL

PAGE 03

LIMA 07674 222133Z

ORTIZ

CONFIDENTIAL

CONFIDENTIAL

CONFIDENTIAL

CONFIDENTIAL